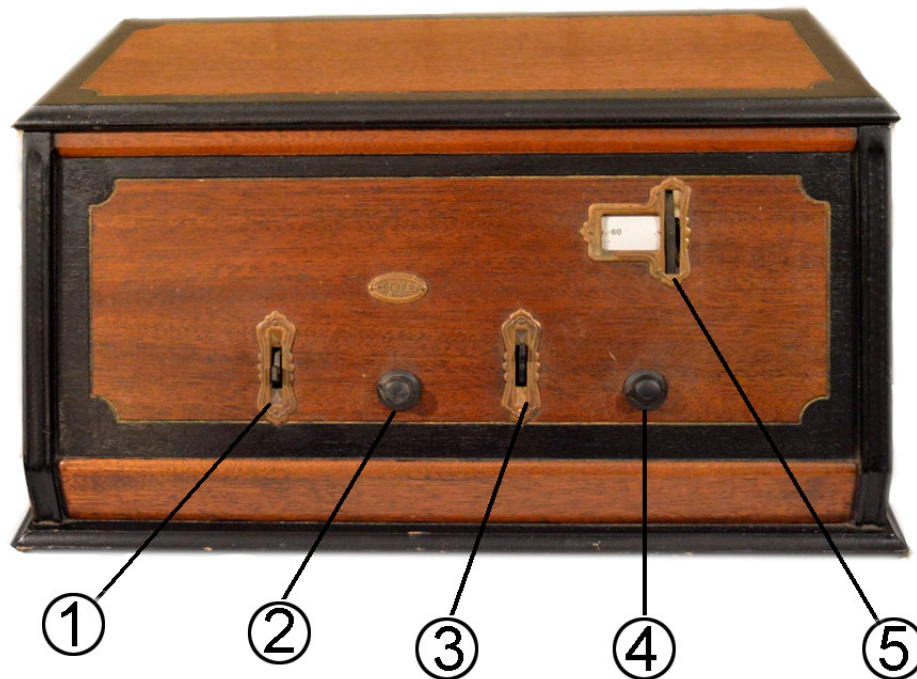


CROSLEY 5-50 OWNER'S GUIDE



Written and published by
www.edsantiqueradios.com
2020

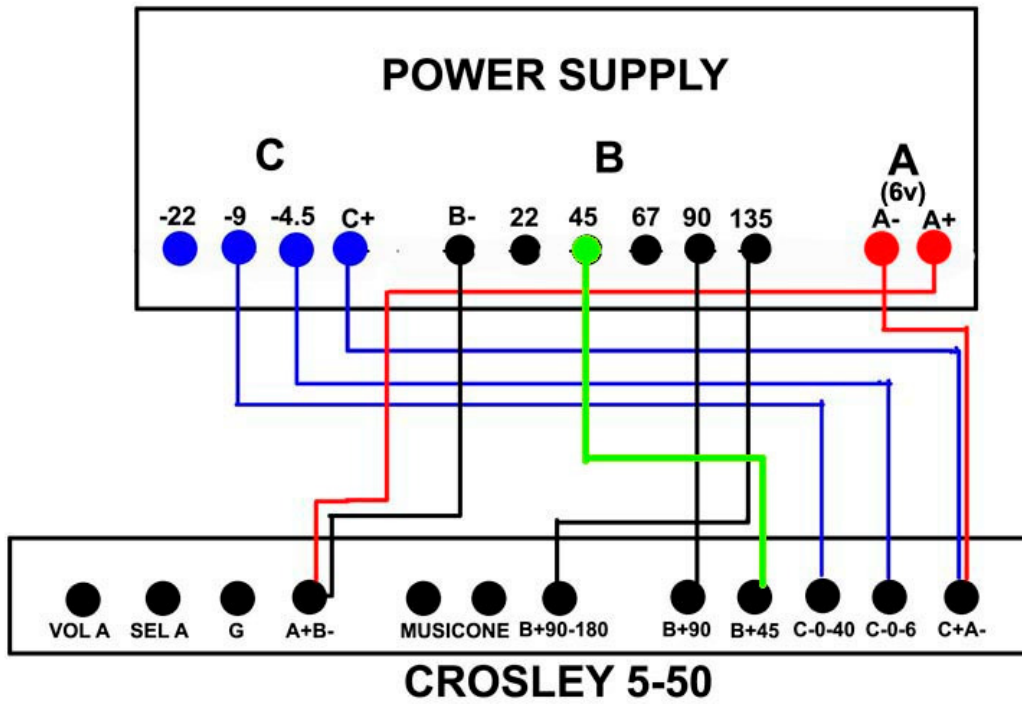
CROSLEY 5-50 AND 5-75 OPERATING INSTRUCTIONS



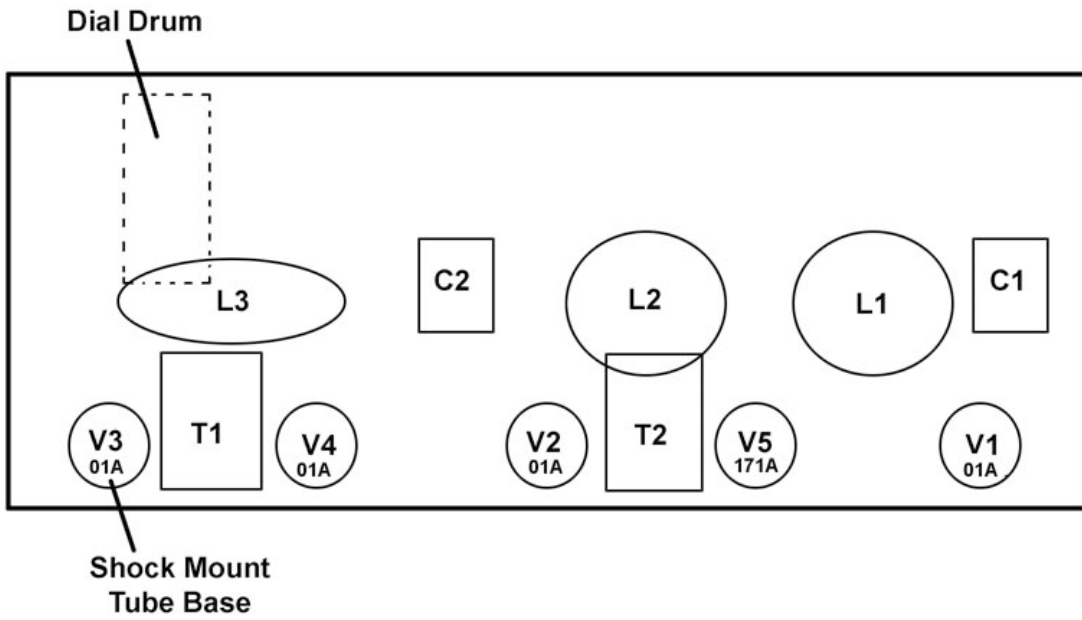
1. Make battery connections (see p.2)
2. Turn the **rheostat control** (2) to the off position (as far to the left as possible).
3. Put the tubes in their sockets and the grid leak (if one is used) in its holder inside the set.
4. Turn on the **crescendone control** (4) about three-fourths of the way (to the right).
5. With all tube combinations except those including 199 type tubes, and with a freshly charged "A" battery, the **rheostat control** (2) should be turned on about seven eighths of a turn. To set it, turn it all the way to the right for an instant, then turn it back about an eighth of a turn. For other tube combinations, the **rheostat** should just be barely turn on or up to one fifth of a turn. As the "A" battery discharges, it will be necessary to slightly advance the **rheostat** setting.
6. Set the **acuminators** (1) and (3) at the middle position.
7. Turn the **drum turning control** (5) slowly until a whistle is heard, indicating reception of a signal. As this **control** (5) is adjusted very slowly, it will be noticed that the whistle first increases in loudness, then decreases, and finally increases again. Adjust the **drum** (5) to the middle low point between the two peaks of whistle loudness.
8. Adjust **acuminator** (3), at the same time turning back the **crescendone** (4) until the whistle clears up into voice or music. Adjust **acuminator** (1) for best clarity and volume, readjusting the crescendone (5) if necessary.

NOTE: The acuminators (1) and (3) and crescendone (4) are effective devices for increasing the sensitivity of the set to seek signals. On local stations or strong signals it is possible to tune without them, simply by turning the master control (5).

This diagram is only for use with four 01A tubes for the RF, detector, and first AF stages, and a 171A for the power output.



CROSLEY 5-50
Under Chassis View



MODELS 550, 575

